



OIL FIRED PACKAGE UNIT SPECIFICATIONS

| MODEL NO. | OPB24-80 | | OPB30-80 | | OPB36-80 | |
|--|--------------------|----------|--------------------|----------|--------------------|----------|
| HEATING CAPACITY | High Fire | Low Fire | High Fire | Low Fire | High Fire | Low Fire |
| HEAT INPUT RATE (BTUH) | 105,000 | 85,000 | 105,000 | 85,000 | 105,000 | 85,000 |
| OUTPUT BTUH ¹ | 85,000 | 68,000 | 85,000 | 68,000 | 85,000 | 68,000 |
| NOMINAL TEMP RISE | 70° | 60° | 70° | 60° | 70° | 60° |
| SEASONAL EFFICIENCY ² (Htg.) | 81.1% | 82% | 81.1% | 82% | 81.1% | 82% |
| COOLING CAPACITY A/C | 2 Tons | | 2 ½ Tons | | 3 Tons | |
| SEER (Clg.) | 14.0 | | 13.0 | | 13.0 | |
| CABINET HEIGHT (IN.) | 34" | | 34" | | 34" | |
| CABINET WIDTH (IN.) | 47" | | 47" | | 47" | |
| CABINET DEPTH (IN.) | 47" | | 47" | | 47" | |
| NOMINAL FLUE OUTLET DIA. | 5" | | 5" | | 5" | |
| APPROX SHIPPING WEIGHT | 610 | | 610 | | 610 | |
| APPROVAL AGENCY | ETL | | ETL | | ETL | |
| QTY AND SIZE OF PERMANENT FILTERS | (1) 20" X 25" | | (1) 20" X 25" | | (1) 20" X 25" | |
| ELECTRICAL REQUIREMENTS | 208-240 V/ 60/ 1PH | | 208-240 V/ 60/ 1PH | | 208-240 V/ 60/ 1PH | |
| MAX FUSE SIZE | 40 | | 40 | | 50 | |
| RECOMMENDED FUSE SIZE | 30 | | 30 | | 35 | |
| WIRE SIZE (AWG) | #10 | | #10 | | #8 | |
| SUPPLY AIR DUCTWORK CONNECTOR (W X H) | 20" X 12" | | 20" X 12" | | 20" X 12" | |
| RETURN AIR DUCTWORK CONNECTOR (W X H) | 20" X 12" | | 20" X 12" | | 20" X 12" | |
| ACCESSORY ITEMS | | | | | | |
| PROGRAMMABLE T-STAT STD/DELUXE | 350164 / 350165 | | 350164 / 350165 | | 350164 / 350165 | |
| ROOF TOP UNIT FRAME | 340355 | | 340355 | | 340355 | |
| DUCT TRANSITION KIT | AOPS8410 | | AOPS8410 | | AOPS8410 | |

¹ OUTPUT BTUH BASED ON ANNUAL FUEL UTILIZATION EFFICIENCY RATED BY MANUFACTURER

² SEASONAL EFFICIENCY (ALSO CALLED AFUE-ANNUAL FUEL UTILIZATION EFFICIENCY) RATINGS ARE BASED ON THE TESTS FOLLOWING U.S. DEPARTMENT OF ENERGY TEST PROCEDURES.

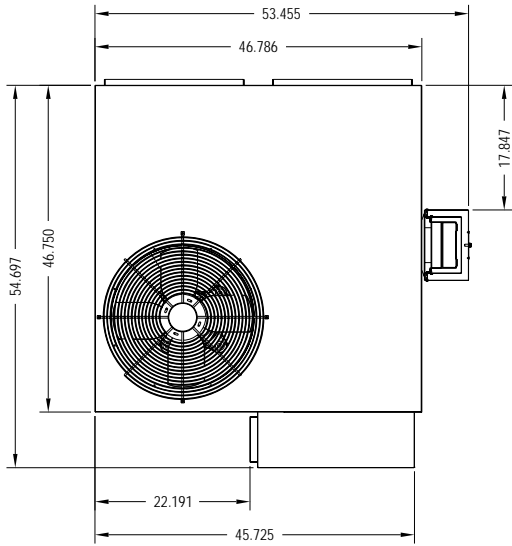
SEE NEXT PAGE FOR MORE DATA –

OIL FIRED PACKAGE UNIT SPECIFICATIONS

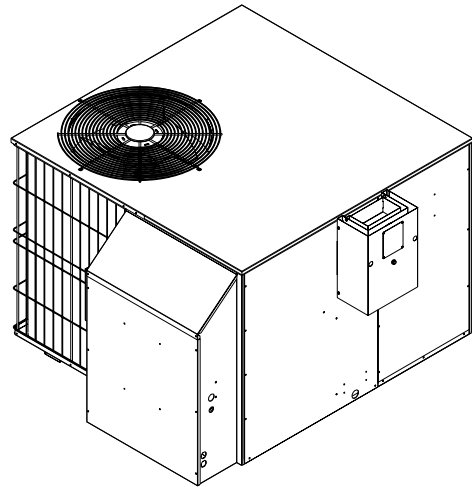
| MODEL NUMBER DIGIT | 1 | 2 | 3 | 4 | 5 | 6 | 7 | 8 | 9 |
|--|------|---------------|---------------|--------------|--------------|---|--------------|--------------|--------------|
| | FUEL | CONFIGURATION | DESIGN CHANGE | CLG CAPACITY | CLG CAPACITY | | HTG CAPACITY | HTG CAPACITY | HTG CAPACITY |
| MODEL NOMENCLATURE EXAMPLE MODEL NUMBERS | O | P | B | 2 | 4 | - | 8 | 0 | |
| | O | P | B | 6 | 0 | - | 1 | 0 | 0 |
| | | | | | | | | | |
| | | | | | | | | | |
| O = OIL | O | | | | | | | | |
| P = PACKAGE UNIT (HTG./CLG.) | | P | | | | | | | |
| DESIGN CHANGE | | | B | | | | | | |
| COOLING CAPACITY MBTUH (000'S) EXAMPLE; 24 = 24,000 (2-TONS) | | | | 2 | 4 | | | | |
| HEATING CAPACITY MBTUH (000'S) WITH FACTORY INSTALLED NOZZLE | | | | | | | 8 | 0 | |

SEE NEXT PAGE FOR MORE DATA –

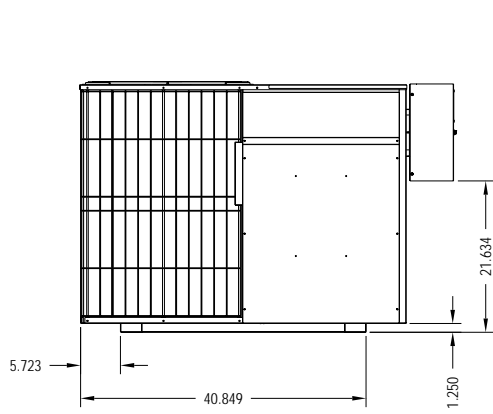
OIL FIRED PACKAGE UNIT SPECIFICATIONS



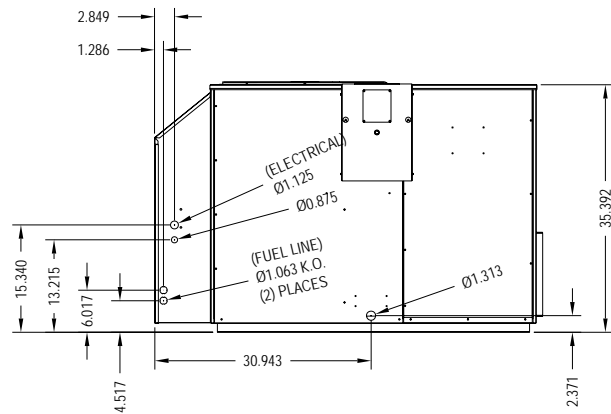
TOP VIEW



ISOMETRIC VIEW



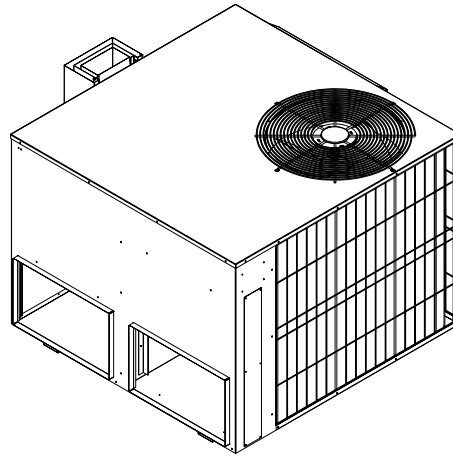
FRONT VIEW



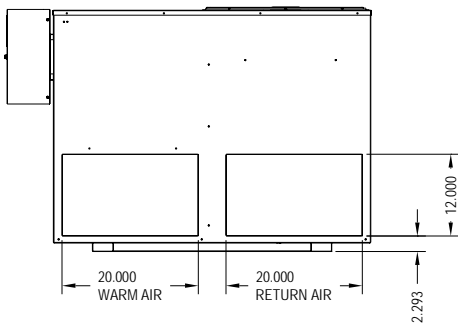
RIGHT VIEW

SEE NEXT PAGE FOR MORE DATA –

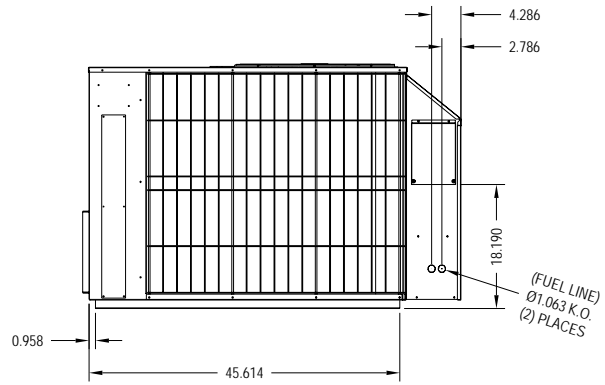
OIL FIRED PACKAGE UNIT SPECIFICATIONS



ISOMETRIC VIEW



BACK VIEW



LEFT VIEW

SEE NEXT PAGE FOR MORE DATA –

OIL FIRED PACKAGE UNIT SPECIFICATIONS

| CLEARANCES | MINIMUM CLEARANCES TO COMBUSTIBLE MATERIALS: |
|-------------------------------------|--|
| SIDES | 3" |
| FRONT (SERVICE ACCESS) | (CLEARANCE TO COMBUSTIBLES) 3" / 24" (SERVICE) |
| REAR | 3" |
| VENT TERMINAL | 3" |
| TOP PLENUM | 1" |
| SIDES PLENUM | 1" |
| CONDENSER COIL FOR ADEQUATE AIRFLOW | 36" |

| BURNER DATA | BECKETT "AFG" S - PLATE 31646 (3 3/8") 31517 CERAMIC | |
|---------------------------|--|-----------|
| AIR TUBE LENGTH (IN.) | 4 ½" | |
| BURNER HEAD TYPE: | F-3 | |
| FUEL TYPE: | #2 | |
| NOZZLE RATING (GPH): | LOW FIRE | HIGH FIRE |
| | .60 | .75 |
| SPRAY ANGLE (DEG.): | 80° | 80° |
| SPRAY PATTERN: | HOLLOW | HOLLOW |
| OIL PUMP PRESSURE (PSIG): | 120 PSI | 130 PSI |
| COMBUSTION CHAMBER TYPE: | REFRACTORY (FIBER) | |

* FACTORY EQUIPPED WITH A .60 GPH 80° H NOZZLE. HIGH FIRE NOZZLE SUPPLIED BY INSTALLER.


| MODEL NO: | OPB24-80 | OPB30-80 | OPB36-80 |
|---|-------------------|----------|----------|
| BLOWER MODEL (DIRECT DRIVE) | DD 100-9R | | |
| MOTOR H.P. | ¾ HP | | |
| MOTOR TYPE & NUMBER OF SPEEDS | ECM- air over 48Y | | |
| HIGH SPEED AIRFLOW (SCFM) @ 0.4 IN. W.G. EXTERNAL STATIC PRESSURE: | 800 | 1000 | 1200 |
| DIAMETER X WIDTH | 10 x 9 | | |


SEE NEXT PAGE FOR MORE DATA –

OIL FIRED PACKAGE UNIT SPECIFICATIONS

HEATING SPEED SET-UPS

| SW 1 POSITION | | | LOW-FIRE | HIGH FIRE HEAT RISE |
|---------------|-----|-----|----------|---------------------|
| 1 | 2 | 3 | | |
| OFF | OFF | OFF | | |
| ON | OFF | OFF | | |
| OFF | ON | OFF | 74 | |
| ON | ON | OFF | 67 | |
| OFF | OFF | ON | 64 | |
| ON | OFF | ON | | 73 |
| OFF | ON | ON | | 67 |
| ON | ON | ON | | 60 |

 OPERATION IN THIS RANGE MAY FORCE THE SAFETY LIMIT TO OPERATE REDUCING PERFORMANCE

 OPERATION IN THIS RANGE MAY CAUSE COMBUSTION GASES TO CONDENSE AND VOID THE WARRANTY

COOLING SPEED SET-UPS

| FAN CONTROL SW 1 SWITCH SETTINGS | CLG. TONAGE | Air Flow | |
|----------------------------------|-------------|----------|-----------|
| | | COOL | CONTINOUS |
| 6-OFF 5-OFF 4-OFF | 2 | 792 | 500 |
| 6-OFF 5-OFF 4-ON | 2.5 | 1008 | 504 |
| 6-OFF 5-ON 4-OFF | 3 | 1200 | 600 |

| BLOWER AMPS | | | | | | | | |
|-----------------------|---------------|-------------------|-----------|-----------|-----------|-----------|-----------|-----|
| PLENUM STATIC (INH2O) | A/C OPERATION | Furnace Operation | | | | | | |
| | | LOW FIRE | | | HIGH FIRE | | | |
| | | 74°F RISE | 67°F RISE | 64°F RISE | 73°F RISE | 67°F RISE | 60°F RISE | |
| OPB24-80 | 0.1 | 1.9 | 1.9 | 2.4 | 2.6 | 3.1 | 3.7 | 4.9 |
| | 0.2 | 2.3 | 2.3 | 2.8 | 3.1 | 3.7 | 4.4 | 5.5 |
| | 0.3 | 2.7 | 2.7 | 3.3 | 3.6 | 4.3 | 5 | 6.1 |
| | 0.4 | 3.1 | 3.1 | 3.7 | 4 | 4.7 | 5.5 | 6.8 |
| OPB30-80 | 0.1 | 3 | 1.9 | 2.4 | 2.6 | 3.1 | 3.7 | 4.9 |
| | 0.2 | 3.6 | 2.3 | 2.8 | 3.1 | 3.7 | 4.4 | 5.5 |
| | 0.3 | 4.2 | 2.7 | 3.3 | 3.6 | 4.3 | 5 | 6.1 |
| | 0.4 | 4.6 | 3.1 | 3.7 | 4 | 4.7 | 5.5 | 6.8 |
| OPB30-80 | 0.1 | 4 | 1.5 | 1.9 | 2.1 | 2.5 | 3.1 | 4.2 |
| | 0.2 | 4.6 | 1.9 | 2.4 | 2.6 | 3.1 | 3.7 | 4.9 |
| | 0.3 | 5.3 | 2.3 | 2.8 | 3.1 | 3.7 | 4.4 | 5.5 |
| | 0.4 | 5.9 | 2.7 | 3.3 | 3.6 | 4.3 | 5 | 6.1 |

SEE NEXT PAGE FOR MORE DATA –

OIL FIRED PACKAGE UNIT SPECIFICATIONS

| MODEL | OPB24-80 | OPB30-80 | OPB36-80 |
|---------------------------------|--------------|--------------|--------------|
| ELECTRICAL DATA | | | |
| VOLTAGE/PHASE/HERTZ | 208-230/1/60 | 208-230/1/60 | 208-230/1/60 |
| COMPRESSOR | ZP20K5E | ZP24K5E | ZP31K5E |
| RLA | 15 | 14.3 | 18.6 |
| LRA | 58.3 | 64 | 79 |
| CONDENSER COIL | | | |
| FACE AREA (SQ FT) | 13.58 | 13.58 | 13.58 |
| ROWS DEEP | 1 | 1 | 1 |
| FINS PER INCH | 22 | 22 | 22 |
| FIN TYPE | LANCED | LANCED | LANCED |
| TUBING OD (IN) | 3/8 | 3/8 | 3/8 |
| CONDENSER FAN | | | |
| TYPE | AXIAL | AXIAL | AXIAL |
| CFM | 2200 | 2200 | 2200 |
| DIAMETER (IN) | 20 | 20 | 20 |
| NO. OF BLADES | 4 | 4 | 4 |
| CONDENSER FAN MOTOR | | | |
| HP | 1/8 | 1/8 | 1/8 |
| RPM | 825 | 825 | 825 |
| FLA | 0.8 | 0.8 | 0.8 |
| REFRIGERANT-410a FURNISHED (OZ) | 72 | 72 | 80 |

| PACKAGE UNIT MODEL | EVAPORATOR COIL MODEL | SEER | EER | TOTAL BTU/HR HEAT REMOVAL | SENSIBLE HEAT REMOVAL |
|--------------------|-----------------------|------|------|---------------------------|-----------------------|
| | A - STYLE | | | | |
| OPB24-80 | 13U2430AA15 | 14.7 | 12.7 | 24400 | 73.4% |
| OPB30-80 | 13U2430AA15 | 13.4 | 11.8 | 28400 | 74.1% |
| OPB36-80 | 13U3648AA17 | 13 | 11.2 | 36200 | 74.5% |

| EVAPORATOR COIL MODEL | APPROX WET COIL PRESSURE DROP (IN H2O) | | | | | |
|-----------------------|--|------|------|------|------|------|
| | 800 | 1000 | 1200 | 1400 | 1600 | 2000 |
| 13U2430AA15 | .17 | .23 | .29 | | | |
| 13U3648AA17 | | | .22 | .25 | .28 | |