

SPECIFICATIONS

MODEL PGL37-312B FUEL GAS NAT/LP
 BTU/HR. INPUT 312,500 BTU/HR. OUTPUT 250,000
 SEASONAL EFFICIENCY 79.8% w/VENT DAMPER 83.2%
 TEMP. RISE 85° FLUE DIA. 9"
 FILTER SIZE (4) 2" x 16" x 20"
 APPROXIMATE SHIPPING WEIGHT 1120 lbs.
 APPROXIMATE EFFECTIVE HEATING SURFACE 16,000 sq. in.
 AGENCY APPROVAL NO. N/A
 ELECTRICAL RATING 115V 60HZ
 TOTAL CURRENT AMPS 18.3 MAX FUSE SIZE 25
 FAN CENTER EQUIPPED NO

BLOWER DATA

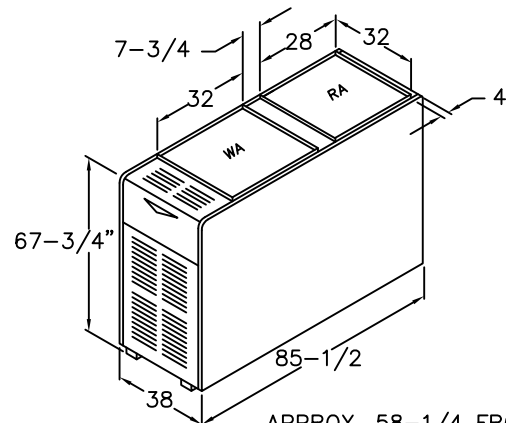
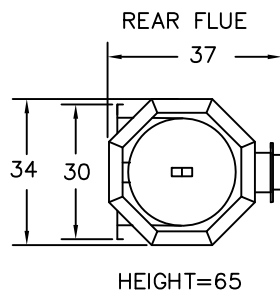
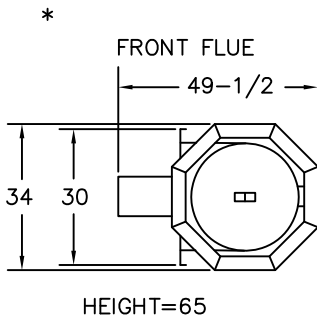
BLOWER MODEL 18-13 BD
 MOTOR H.P. 3/4
 BLOWER PULLEY 10 x 1
 MOTOR PULLEY 3-1/4 x 5/8
 BELT SIZE 70

BURNER DATA

BURNER MODEL WAYNE SPEC. NO. HSG-400
 AIR TUBE LENGTH 5-3/4" HEAD N/A
 ORIFICE NAT. .390
 L.P. .297
 REFRACTORY #7

CLEARANCES

MINIMUM CLEARANCES TO COMBUSTIBLE MATERIALS
 SIDES 2"
 FRONT (SERVICE ACCESS) 24"
 REAR 6"
 FLUE/VENT 18"
 TOP & SIDES OF PLENUM 2"



APPROX. 58-1/4 FROM BASE OF UNIT TO CENTERLINE OF THE FLUE PIPE ON H.E.