

SPECIFICATIONS

MODEL OH5-85D FUEL OIL
 BTU/HR. INPUT 106,250 BTU/HR. OUTPUT 85,000
 SEASONAL EFFICIENCY 80.6% w/VENT DAMPER 85.0%
 TEMP. RISE 70° FLUE DIA. 6"
 FILTER SIZE (1) 16" x 25"
 APPROXIMATE SHIPPING WEIGHT 410 lbs.
 APPROXIMATE EFFECTIVE HEATING SURFACE 4,650 sq. in.
 AGENCY APPROVAL NO. UL MP2436
 ELECTRICAL RATING 115V 60HZ
 TOTAL CURRENT AMPS 12.4 MAX FUSE SIZE 15
 FAN CENTER EQUIPPED YES

BLOWER DATA

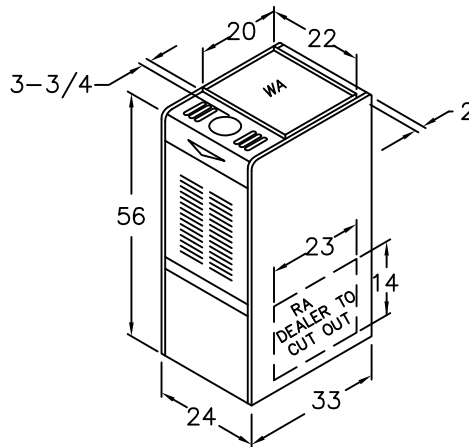
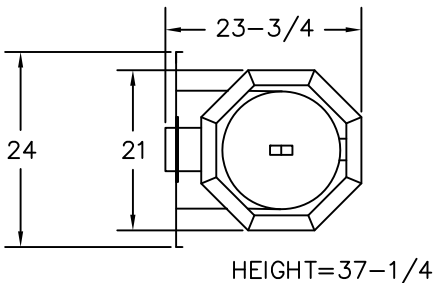
BLOWER MODEL 10-9 DD
 MOTOR H.P. 1/2
 OPTIONAL: 3/4 H.P. A/C UPGRADE KIT AOPS7348

BURNER DATA

BURNER MODEL BECKETT SPEC. NO. TP-101
 AIR TUBE LENGTH 7-3/4" HEAD F-3
 NOZZLE (GPH/ANGLE/TYPER) SHIPPED 0.75x80°A
 U.L. RATED 0.75x80°A
 REFRACTORY #5 PUMP PRESSURE (P.S.I.) 100

* CLEARANCES

MINIMUM CLEARANCES TO COMBUSTIBLE MATERIALS
 SIDES 1"
 FRONT (SERVICE ACCESS) 24"
 REAR 1"
 FLUE/VENT 18"
 TOP & SIDES OF PLENUM 1"

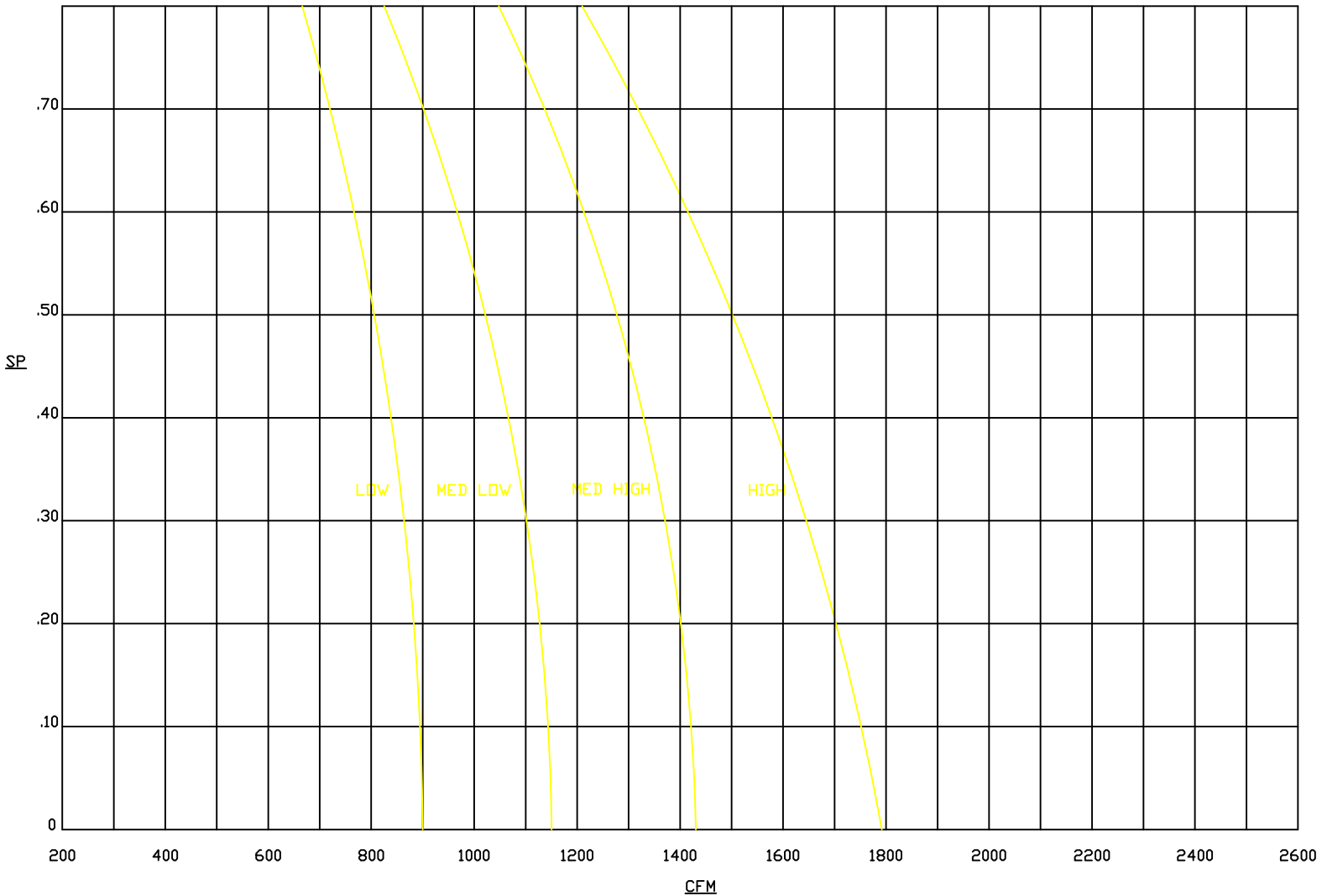


* APPROX. 51 FROM BASE OF UNIT TO CENTERLINE OF THE FLUE PIPE ON H.E.

SEE NEXT PAGE FOR MORE DATA -

ALTERATIONS REQ'D. FOR A/C @ .5" W.C. EXTERNAL STATIC PRESSURE					
COOLING UNIT	APPROX TONS	BLOWER MOTOR H.P.	BLOWER SPEED		TEMP. RISE HTG.
			HTG.	CLG.	
AC1024 AC1224	2	1/2 - 4 SPEED	MED-HI	LOW	78°
AC1030 AC1230	2.5	1/2 - 4 SPEED	MED-LO	MED-LO	76°
AC1036 AC1236	3	1/2 - 4 SPEED	MED-LO	MED-HI	73°
AC1042 AC1242	3.5	1/2 - 4 SPEED	MED-LO	HIGH	70°

AIR PERFORMANCE (CFM)					
E.S.P. WC \ SPEED	.2	.3	.4	.5	.6
* # LOW	891	870	860	797	746
MED/LOW	1118	1098	1069	1025	963
MED/HIGH	1400	1369	1322	1262	1211
HIGH	1700	1638	1576	1500	1418



SPEED NOT RECOMMENDED FOR HEATING.

ALTERATIONS REQ'D. FOR A/C @ .5" W.C. EXTERNAL STATIC PRESSURE					
COOLING UNIT	APPROX TONS	BLOWER MOTOR H.P.	BLOWER SPEED		TEMP. RISE HTG.
			HTG.	CLG.	
AC1030 AC1230	2.5	3/4 - 4 SPEED	LOW	LOW	74°
AC1036 AC1236	3	3/4 - 4 SPEED	LOW	MED-LO	74°
AC1042 AC1242	3.5	3/4 - 4 SPEED	LOW	MED-HI	73°
AC1048 AC1048 3	4	3/4 - 4 SPEED	LOW	HIGH	71°

AIR PERFORMANCE (CFM)					
E.S.P. WC SPEED	.2	.3	.4	.5	.6
LOW	1107	1089	1068	1026	998
MED/LOW	1353	1319	1288	1256	1200
MED/HIGH	1599	1551	1505	1451	1402
HIGH	1875	1822	1755	1698	1620

