

Important

When installing this control board on a counter flow or horizontal furnace a jumper JW10 must be cut to enable the correct fan timings to ensure nuisance free operation. See Fig. 1 below. With the JW10 jumper cut the fan will start at a reduced speed after a short delay to prevent the auxiliary limit from tripping. Once the normal fan delay has expired the fan will go to the selected heating speed. See table 1 below for fan delay settings.

DIP SWITCH 2 SECTION STATE				BLOWER DELAY TIMES		
1	2	3	4	Counter Flow ON - SEC	ON - SEC	OFF - MIN
OFF	OFF			15	30	
ON	OFF			24	60	
OFF	ON			36	120	
ON	ON			48	240	
		OFF	OFF			2
		ON	OFF			4
		OFF	ON			6
		ON	ON			8

Table 1: ON and OFF Blower Delay Time Switch Settings

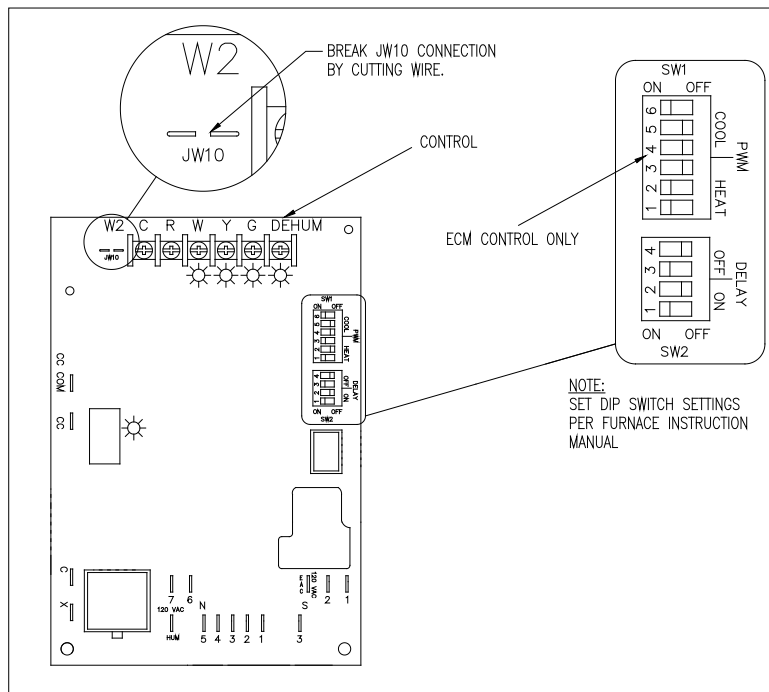


FIG. 1