



## OIL FIRED PACKAGE UNIT SPECIFICATIONS

MODEL NO.	OPB24-80		OPB30-80		OPB36-80	
HEATING CAPACITY	High Fire	Low Fire	High Fire	Low Fire	High Fire	Low Fire
HEAT INPUT RATE (BTUH)	105,000	85,000	105,000	85,000	105,000	85,000
OUTPUT BTUH <sup>1</sup>	85,000	68,000	85,000	68,000	85,000	68,000
NOMINAL TEMP RISE	70°	60°	70°	60°	70°	60°
SEASONAL EFFICIENCY <sup>2</sup> (Htg.)	81.1%	82%	81.1%	82%	81.1%	82%
COOLING CAPACITY A/C	2 Tons		2 ½ Tons		3 Tons	
SEER (Clg.)	14.0		13.0		13.0	
CABINET HEIGHT (IN.)	34"		34"		34"	
CABINET WIDTH (IN.)	47"		47"		47"	
CABINET DEPTH (IN.)	47"		47"		47"	
NOMINAL FLUE OUTLET DIA.	5"		5"		5"	
APPROX SHIPPING WEIGHT	610		610		610	
APPROVAL AGENCY	ETL		ETL		ETL	
QTY AND SIZE OF PERMANENT FILTERS	(1) 20" X 25"		(1) 20" X 25"		(1) 20" X 25"	
ELECTRICAL REQUIREMENTS	208-240 V/ 60/ 1PH		208-240 V/ 60/ 1PH		208-240 V/ 60/ 1PH	
MAX FUSE SIZE	40		40		50	
RECOMMENDED FUSE SIZE	30		30		35	
WIRE SIZE (AWG)	#10		#10		#8	
SUPPLY AIR DUCTWORK CONNECTOR (W X H)	20" X 12"		20" X 12"		20" X 12"	
RETURN AIR DUCTWORK CONNECTOR (W X H)	20" X 12"		20" X 12"		20" X 12"	
<b>ACCESSORY ITEMS</b>						
PROGRAMMABLE T-STAT	350866		350866		350866	
ROOF TOP UNIT FRAME	340355		340355		340355	
DUCT TRANSITION KIT	AOPS8410		AOPS8410		AOPS8410	

<sup>1</sup> OUTPUT BTUH BASED ON ANNUAL FUEL UTILIZATION EFFICIENCY RATED BY MANUFACTURER

<sup>2</sup> SEASONAL EFFICIENCY (ALSO CALLED AFUE-ANNUAL FUEL UTILIZATION EFFICIENCY) RATINGS ARE BASED ON THE TESTS FOLLOWING U.S. DEPARTMENT OF ENERGY TEST PROCEDURES.

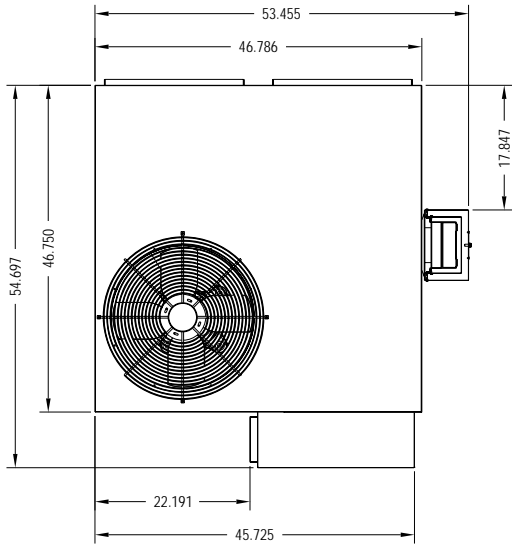
**SEE NEXT PAGE FOR MORE DATA –**

## OIL FIRED PACKAGE UNIT SPECIFICATIONS

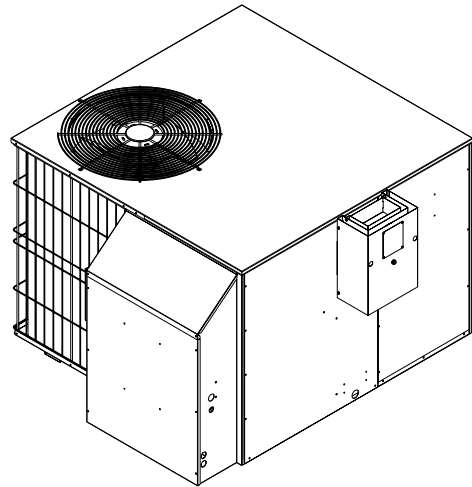
MODEL NUMBER DIGIT	1	2	3	4	5	6	7	8	9
	FUEL	CONFIGURATION	DESIGN CHANGE	CLG CAPACITY	CLG CAPACITY		HTG CAPACITY	HTG CAPACITY	HTG CAPACITY
MODEL NOMENCLATURE EXAMPLE MODEL NUMBERS	O	P	B	2	4	-	8	0	
	O	P	B	6	0	-	1	0	0
O = OIL	O								
P = PACKAGE UNIT (HTG./CLG.)		P							
DESIGN CHANGE			B						
COOLING CAPACITY MBTUH (000'S) EXAMPLE; 24 = 24,000 (2-TONS)				2	4				
HEATING CAPACITY MBTUH (000'S) WITH FACTORY INSTALLED NOZZLE							8	0	

SEE NEXT PAGE FOR MORE DATA –

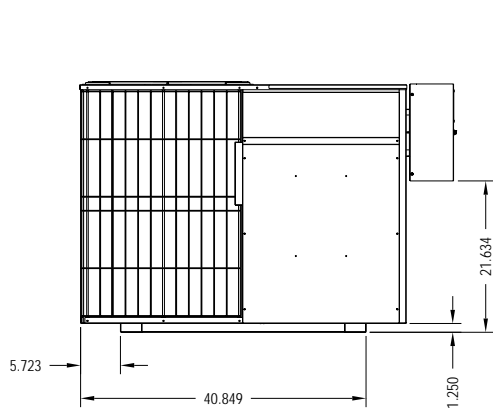
# OIL FIRED PACKAGE UNIT SPECIFICATIONS



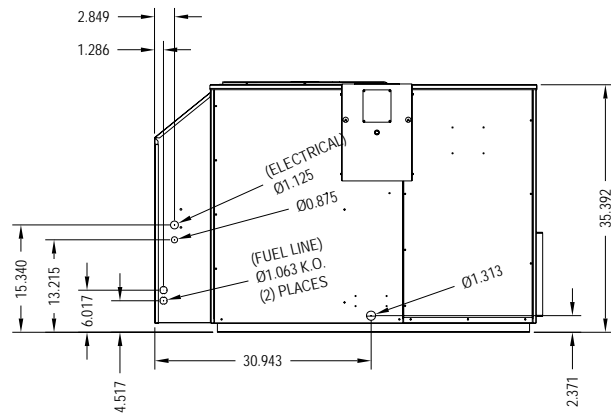
TOP VIEW



ISOMETRIC VIEW



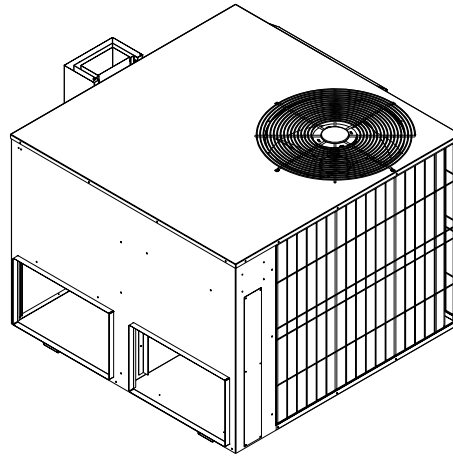
FRONT VIEW



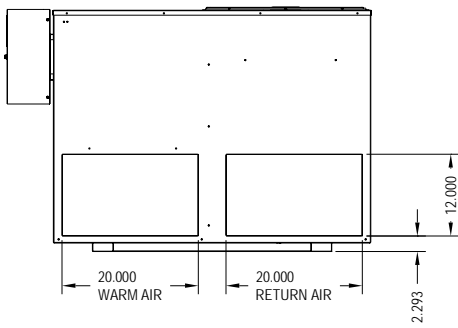
RIGHT VIEW

SEE NEXT PAGE FOR MORE DATA –

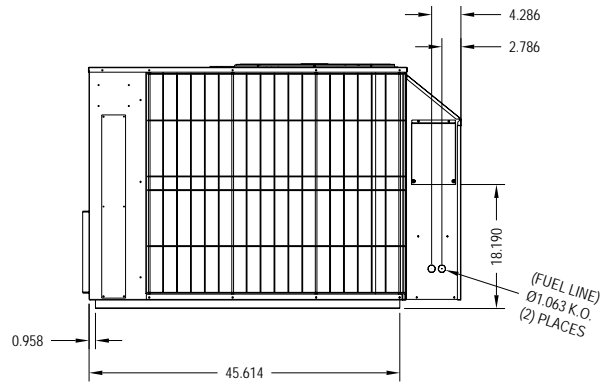
# OIL FIRED PACKAGE UNIT SPECIFICATIONS



ISOMETRIC VIEW



BACK VIEW



LEFT VIEW

SEE NEXT PAGE FOR MORE DATA –

## OIL FIRED PACKAGE UNIT SPECIFICATIONS

CLEARANCES	MINIMUM CLEARANCES TO COMBUSTIBLE MATERIALS:
SIDES	3"
FRONT (SERVICE ACCESS)	(CLEARANCE TO COMBUSTIBLES) 3" / 24" (SERVICE)
REAR	3"
VENT TERMINAL	3"
TOP PLENUM	1"
SIDES PLENUM	1"
CONDENSER COIL FOR ADEQUATE AIRFLOW	36"

BURNER DATA	BECKETT "AFG" S - PLATE 31646 (3 3/8") 31517 CERAMIC	
AIR TUBE LENGTH (IN.)	4 ½"	
BURNER HEAD TYPE:	F-3	
FUEL TYPE:	#2	
NOZZLE RATING (GPH):	LOW FIRE	HIGH FIRE
	.60	.75
SPRAY ANGLE (DEG.):	80°	80°
SPRAY PATTERN:	HOLLOW	HOLLOW
OIL PUMP PRESSURE (PSIG):	120 PSI	130 PSI
COMBUSTION CHAMBER TYPE:	REFRACTORY (FIBER)	

\* FACTORY EQUIPPED WITH A .60 GPH 80° H NOZZLE. HIGH FIRE NOZZLE SUPPLIED BY INSTALLER.


MODEL NO:	OPB24-80	OPB30-80	OPB36-80
BLOWER MODEL (DIRECT DRIVE)	DD 100-9R		
MOTOR H.P.	¾ HP		
MOTOR TYPE & NUMBER OF SPEEDS	ECM- air over 48Y		
HIGH SPEED AIRFLOW (SCFM) @ 0.4 IN. W.G. EXTERNAL STATIC PRESSURE:	800	1000	1200
DIAMETER X WIDTH	10 x 9		


**SEE NEXT PAGE FOR MORE DATA –**

## OIL FIRED PACKAGE UNIT SPECIFICATIONS

### HEATING SPEED SET-UPS

SW 1 POSITION			LOW-FIRE	HIGH FIRE HEAT RISE
1	2	3		
OFF	OFF	OFF		
ON	OFF	OFF		
OFF	ON	OFF	74	
ON	ON	OFF	67	
OFF	OFF	ON	64	
ON	OFF	ON		73
OFF	ON	ON		67
ON	ON	ON		60

 OPERATION IN THIS RANGE MAY FORCE THE SAFETY LIMIT TO OPERATE REDUCING PERFORMANCE

 OPERATION IN THIS RANGE MAY CAUSE COMBUSTION GASES TO CONDENSE AND VOID THE WARRANTY

### COOLING SPEED SET-UPS

FAN CONTROL SW 1 SWITCH SETTINGS	CLG. TONAGE	Air Flow	
		COOL	CONTINOUS
6-OFF 5-OFF 4-OFF	2	792	500
6-OFF 5-OFF 4-ON	2.5	1008	504
6-OFF 5-ON 4-OFF	3	1200	600

BLOWER AMPS								
PLENUM STATIC (INH2O)	A/C OPERATION	Furnace Operation						
		LOW FIRE			HIGH FIRE			
		74°F RISE	67°F RISE	64°F RISE	73°F RISE	67°F RISE	60°F RISE	
OPB24-80	0.1	1.9	1.9	2.4	2.6	3.1	3.7	4.9
	0.2	2.3	2.3	2.8	3.1	3.7	4.4	5.5
	0.3	2.7	2.7	3.3	3.6	4.3	5	6.1
	0.4	3.1	3.1	3.7	4	4.7	5.5	6.8
OPB30-80	0.1	3	1.9	2.4	2.6	3.1	3.7	4.9
	0.2	3.6	2.3	2.8	3.1	3.7	4.4	5.5
	0.3	4.2	2.7	3.3	3.6	4.3	5	6.1
	0.4	4.6	3.1	3.7	4	4.7	5.5	6.8
OPB30-80	0.1	4	1.5	1.9	2.1	2.5	3.1	4.2
	0.2	4.6	1.9	2.4	2.6	3.1	3.7	4.9
	0.3	5.3	2.3	2.8	3.1	3.7	4.4	5.5
	0.4	5.9	2.7	3.3	3.6	4.3	5	6.1

SEE NEXT PAGE FOR MORE DATA –

## OIL FIRED PACKAGE UNIT SPECIFICATIONS

MODEL	OPB24-80	OPB30-80	OPB36-80
<b>ELECTRICAL DATA</b>			
VOLTAGE/PHASE/HERTZ	208-230/1/60	208-230/1/60	208-230/1/60
COMPRESSOR	ZP20K5E	ZP24K5E	ZP31K5E
RLA	15	14.3	18.6
LRA	58.3	64	79
<b>CONDENSER COIL</b>			
FACE AREA (SQ FT)	13.58	13.58	13.58
ROWS DEEP	1	1	1
FINS PER INCH	22	22	22
FIN TYPE	LANCED	LANCED	LANCED
TUBING OD (IN)	3/8	3/8	3/8
<b>CONDENSER FAN</b>			
TYPE	AXIAL	AXIAL	AXIAL
CFM	2200	2200	2200
DIAMETER (IN)	20	20	20
NO. OF BLADES	4	4	4
<b>CONDENSER FAN MOTOR</b>			
HP	1/8	1/8	1/8
RPM	825	825	825
FLA	0.8	0.8	0.8
REFRIGERANT-410a FURNISHED (OZ)	72	72	80

PACKAGE UNIT MODEL	EVAPORATOR COIL MODEL	SEER	EER	TOTAL BTU/HR HEAT REMOVAL	SENSIBLE HEAT REMOVAL
	A - STYLE				
OPB24-80	13U2430AA15	14.7	12.7	24400	73.4%
OPB30-80	13U2430AA15	13.4	11.8	28400	74.1%
OPB36-80	13U3648AA17	13	11.2	36200	74.5%

EVAPORATOR COIL MODEL	APPROX WET COIL PRESSURE DROP (IN H2O)					
	800	1000	1200	1400	1600	2000
13U2430AA15	.17	.23	.29			
13U3648AA17			.22	.25	.28	